



THE
GOTHIC
GT. HAMPTON ST

A DEVELOPMENT BY

CORDIA

INTRODUCING

The Gothic

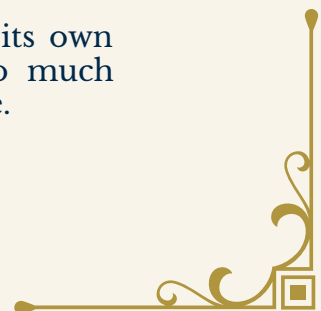
ON GREAT HAMPTON STREET



The Gothic - Cordia UK's flagship development - is the first of its kind. Offering 14 bespoke apartments, The Gothic is the epitome of premium living in one of the UK's fastest growing cities. Situated in three Grade II Listed and heritage buildings, this one-of-a-kind development not only draws from its historic roots, but has been carefully crafted to meet the demands of the modern resident.

Authentic Victorian features and traditional cornicing seamlessly blend with contemporary decor and the latest functionality, making it a breath of fresh air in the Birmingham property market. The Gothic offers an eclectic mix of one-, two- and three-bedroom apartments and duplexes, perfect for young professionals searching for their next premium property.

With each and every apartment boasting its own personality and quirks, The Gothic is so much more than just a place to live - it's a lifestyle.



THE HISTORY OF

The Gothic

The Gothic spans three Grade II Listed and heritage buildings in the heart of one of Birmingham's most industrious neighbourhoods. Collectively, these three buildings can be traced back to the early 1830s, carrying a myriad of different identities along the way.

Goode's House is one of three buildings that have been thoughtfully restored in The Gothic. This historic building was first brought to life in the 1830s, when John Goode opened the space to manufacture gold chains.

After 80 years of consistent growth, Goode's House was no longer big enough for the thriving business. With Great Hampton Street's strong industrious roots, the team didn't need to look far for a new location.

The Quality Works - a bigger factory space next door to Goode's House - soon became one of the most well-known gold-chain manufacturers in the Jewellery Quarter. With high ceilings, striking windows and spacious rooms as a standard, The Quality Works has now been transformed into contemporary living spaces, perfect for the modern resident.

While The Gothic comprises three historic buildings, the Grade II Listed building is arguably the most iconic. From The Gothic to The Gothic Stores and The Gothic Inn, this historic building carried many identities up until the early 2000s, but always remained a cornerstone in the local community and, in the Jewellery Quarter's rich history.

The Gothic will now contribute to Birmingham's exciting future by redefining the standards of city living, and will continue to pay homage to the building's rich heritage. Through thoughtful restorations of The Gothic's iconic oriel window and characterful turret, this development will serve as a polite reminder of the building's colourful history.



Interior Before Restoration (Below)

Circa - 2020



The Gothic (Below)

Built Circa - 1870



Goode's House (Above)

Built Circa - 1840

*The Gothic will contribute to
Birmingham's exciting future
by redefining city living.*

Quality Works (Left)

Built Circa - 1914



Getting Around

Transport

St Paul's Tram Station	0.2 miles
Snow Hill Station	0.7 miles
New Street Station	1 miles
Moor Street Station	1 miles
Curzon Street HS2 terminal	1.2 miles

Restaurants

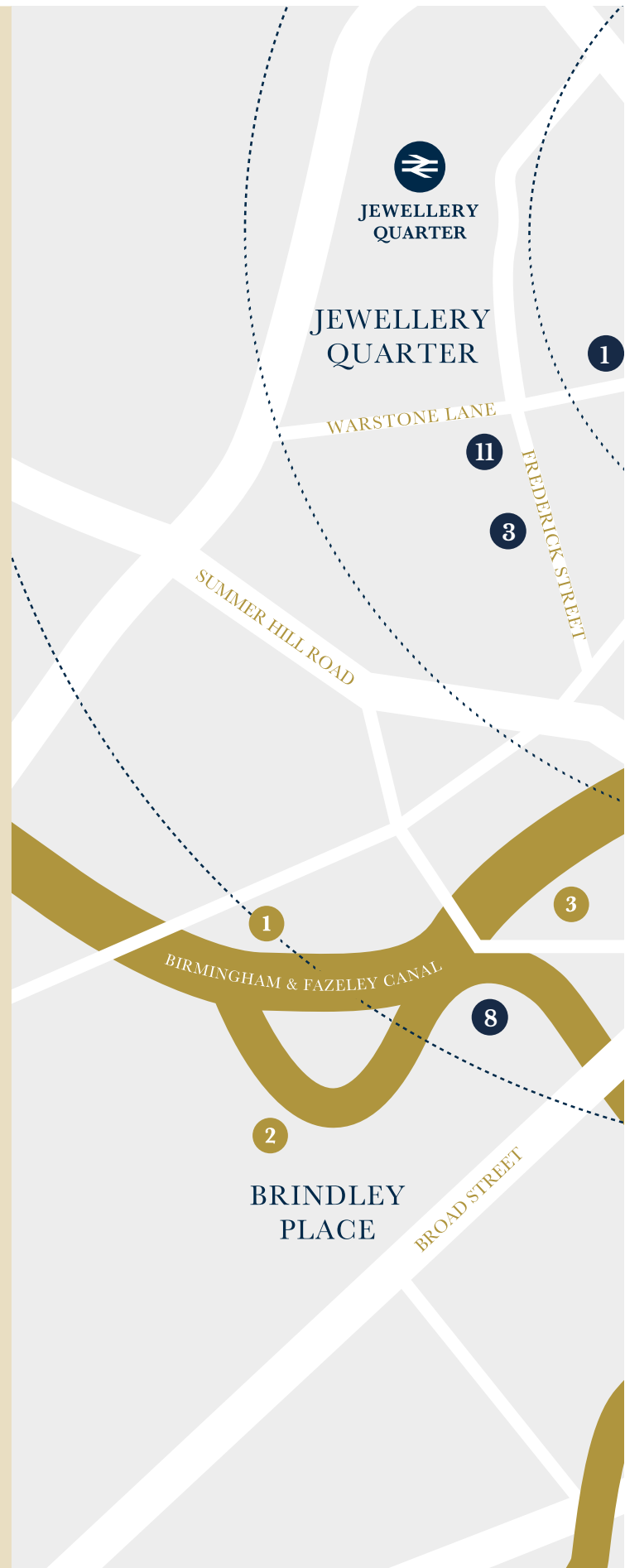
Purnell's	0.6 miles
Adam's Restaurant	0.8 miles
Opheem	0.8 miles
Gusto	0.9 miles
Gaicho	0.9 miles
Simpsons	2.5 miles

Education

The University of Law	0.1 miles
Perry Beeches II Free School	0.4 miles
University College Birmingham	0.8 miles
Aston University	1 miles
Birmingham City University	1.2 miles
University of Birmingham	4 miles
King Edward VI High School	4 miles

Hospitals

Birmingham Children's Hospital	0.9 miles
Birmingham City Hospital	1.2 miles
Queen Elizabeth Hospital	4.2 miles
Royal Orthopaedic Hospital	6.4 miles





Restaurants

- 1 The Wilderness
- 2 St. Paul's House
- 3 Lasan
- 4 Tattu
- 5 Gaucho
- 6 Dishoom
- 7 Albert's Schloss
- 8 Pulperia
- 9 Hockley Social Club
- 10 Trentina
- 11 Tierra Tacos

Leisure & Entertainment

- | | |
|--|---------------------------|
| 1 Utilita Arena | 9 Cathedral Square |
| 2 Brindley Place | 10 Grand Central |
| 3 ICC/Symphony Hall | 11 Bullring |
| 4 Centenary Square | 12 Aston University |
| 5 Arena Central | 13 St Paul's Square |
| 6 The Cube | 14 Curzon Street |
| 7 The Mailbox | HS2 Terminal |
| 8 Victoria Square | Colmore Business District |
| <small>Town Hall/Birmingham Museum & Art Gallery</small> | |

THE FUTURE OF
Great Hampton Street



Great Hampton Street is in the midst of its biggest transformation to date. The accessibility of the Jewellery Quarter has long made it a destination for living and working, and the redevelopment of Great Hampton Street will only draw more businesses, residents and visitors to this thriving neighbourhood.

The Gothic sits amongst some of the most exciting regeneration projects in Birmingham, and residents will directly benefit from the wealth of new amenities that are set to arrive in the coming years. With commercial units across The Gothic, The Bank (Cordia Blackswan HQ) and The Lamp Works, this regeneration scheme will expand Birmingham's independent presence at its core.

With colourful workspaces that signify the creativity of the Jewellery Quarter, Great Hampton Street will be an extension of the city's expansive business district, putting new companies on the map and generating more opportunities for local residents.



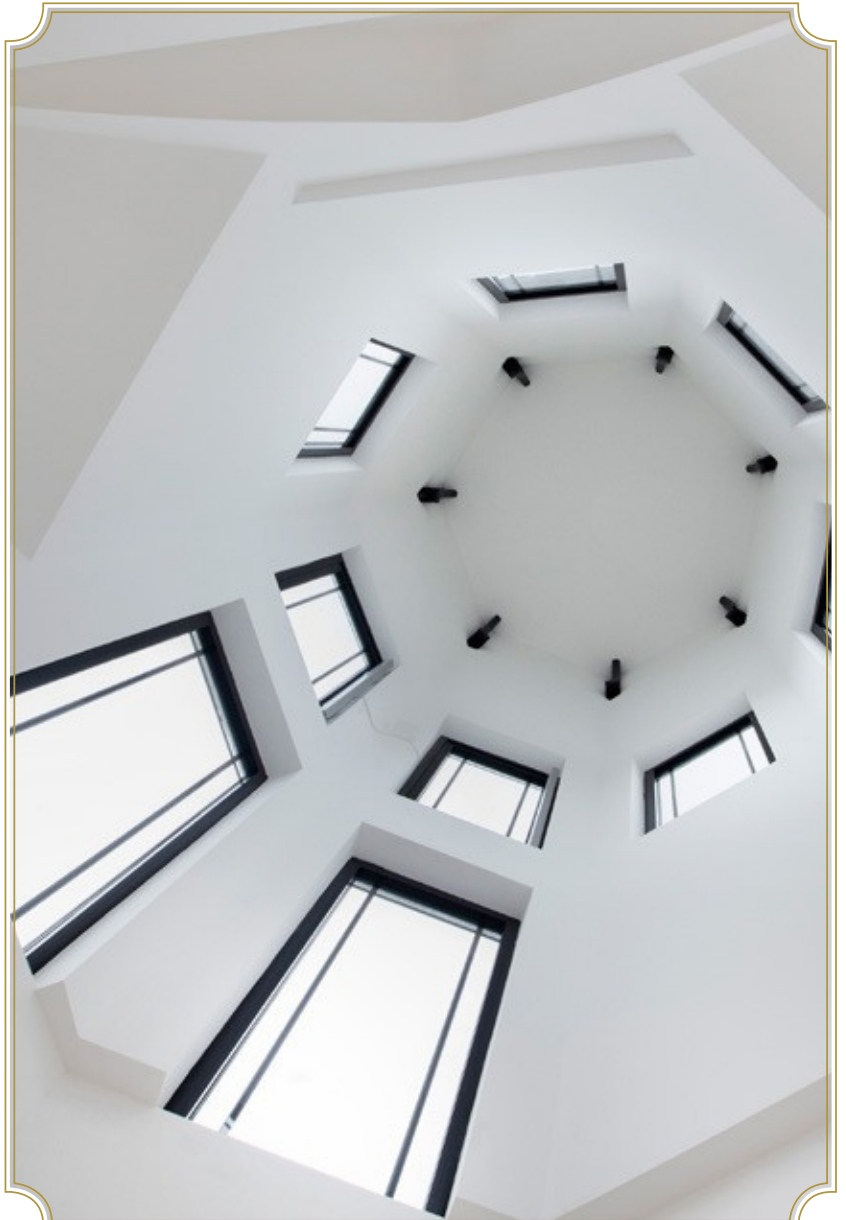




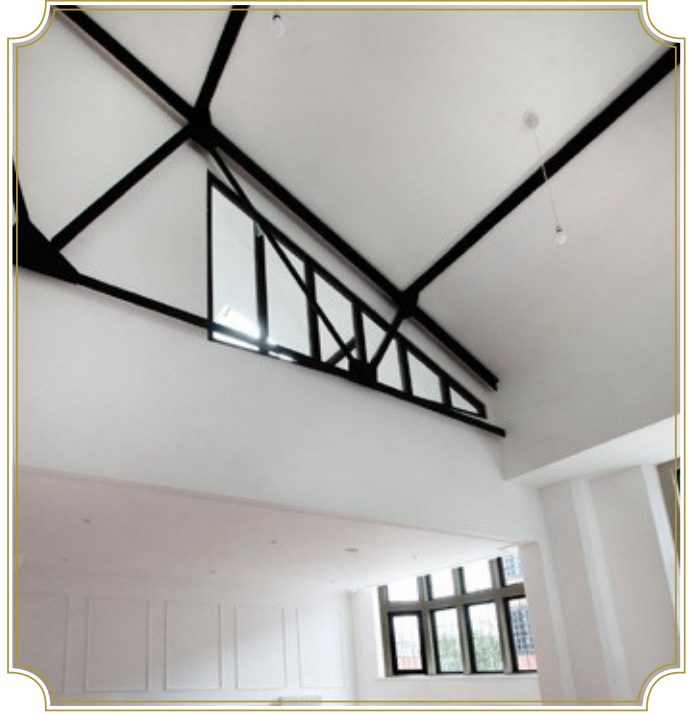
APARTMENT

Spotlight

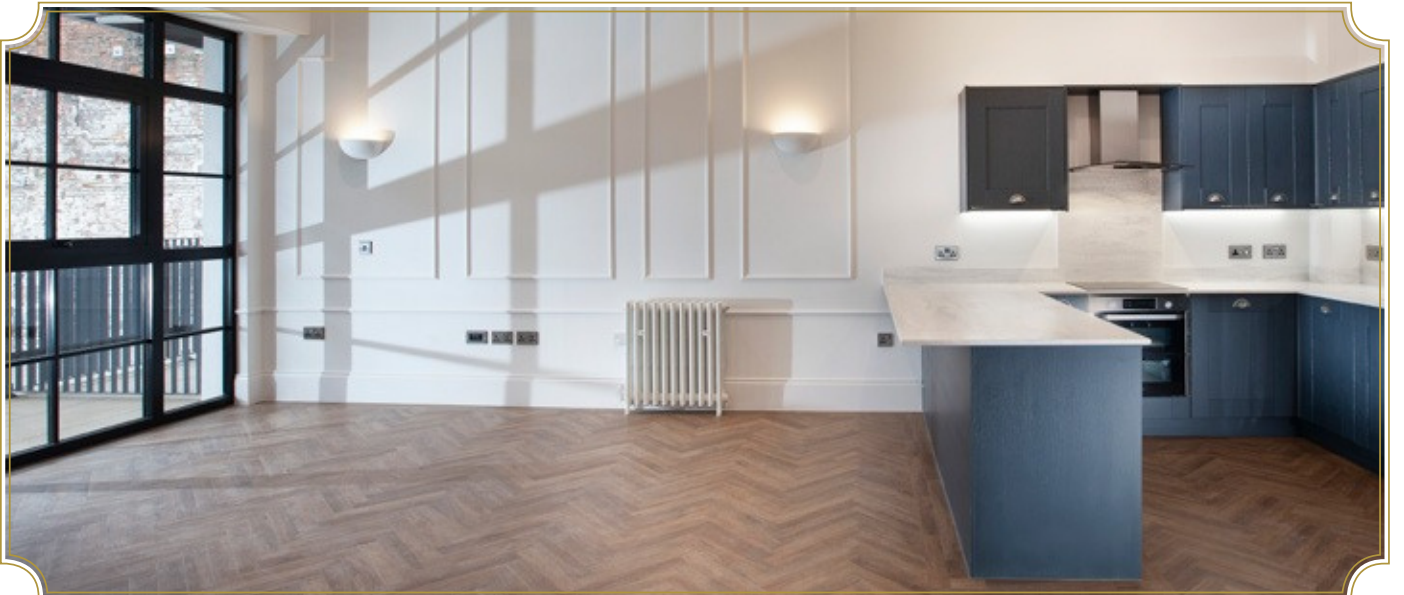


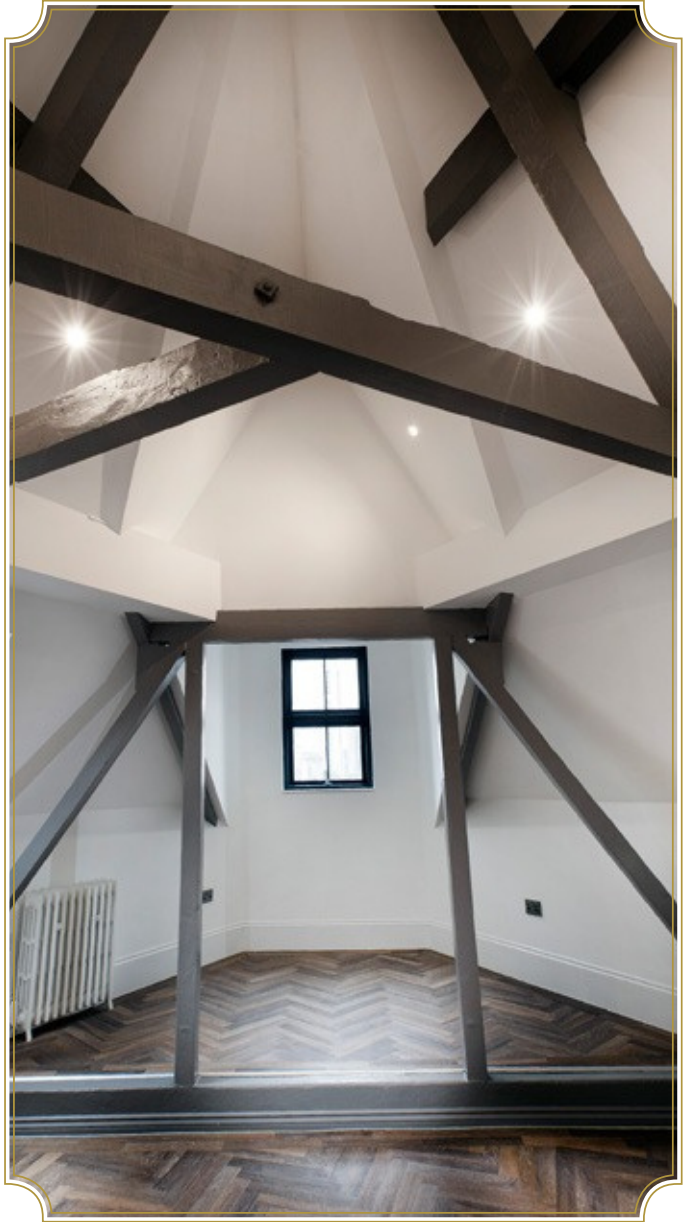


THE
GOTHIC
GT. HAMPTON ST



THE
GOthic
GT. HAMPTON ST





CORDIA

www.cordia.uk

| 0121 594 0476

| enquiry@cordiahomes.com

