

THE
PRESSWORKS

JEWELLERY QUARTER

INTRODUCING *48 unique homes*
IN THE HEART OF BIRMINGHAM'S
prestigious JEWELLERY QUARTER





4

5

A
NEW LEGACY
AWAITS

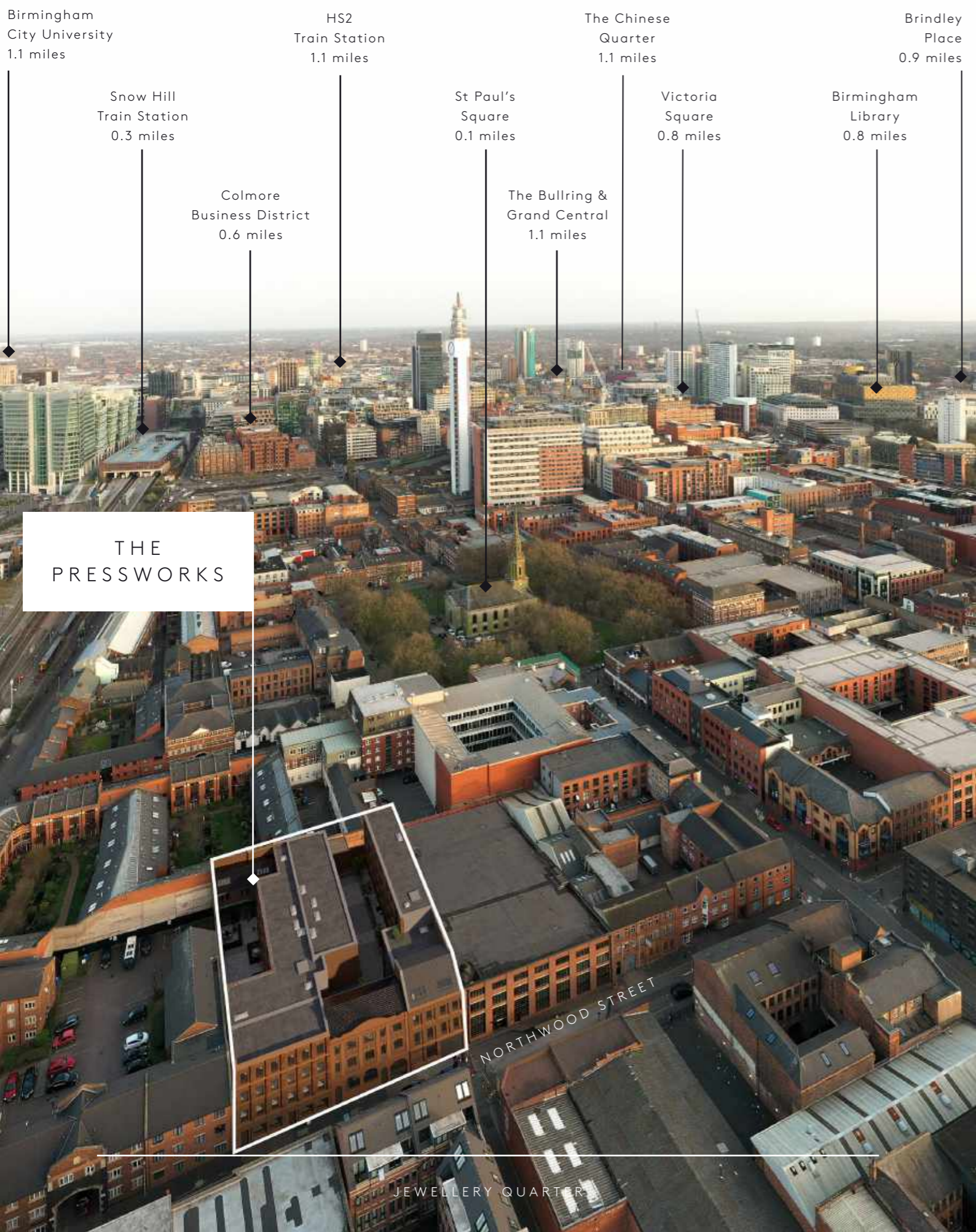


*A place where
hard-work, ingenuity
and big dreams prevail.*



*As true today,
as it was back
then.*

Computer generated image. Subject to change.



THE
PRESSWORKS

THE NEXT *chapter*
OF BIRMINGHAM'S
story STARTS HERE

The Pressworks is located in the heart of Birmingham's prestigious Jewellery Quarter. Just moments from the famous St Paul's Square, The Colmore Business District and Birmingham City Centre, the development occupies a premier location in the city's most desirable district.

| 0






THE PRESSWORKS

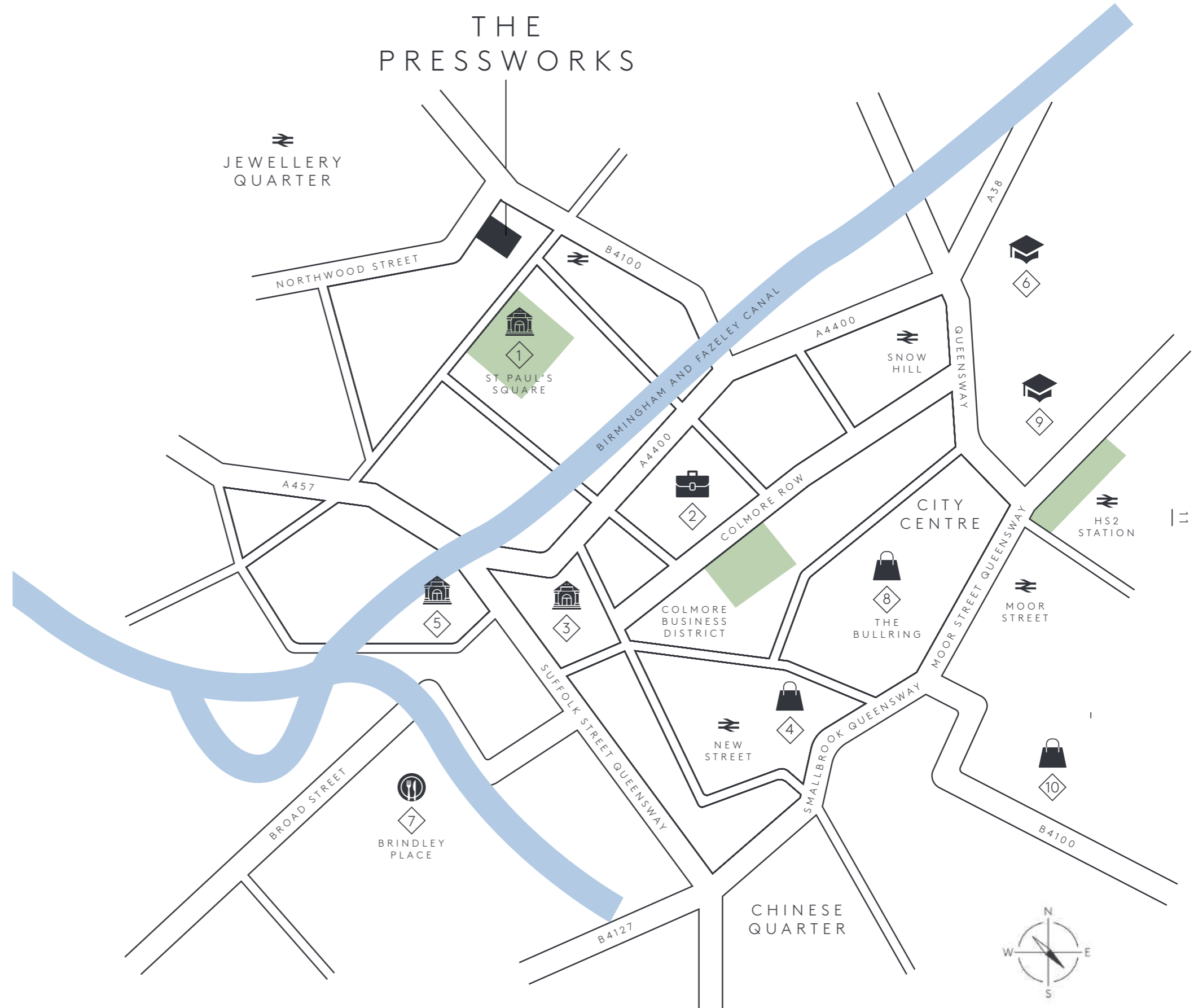
THE *premier*
DESTINATION AT THE
heart OF THE ACTION

SITES & ATTRACTIONS

- | | | | |
|-----|----------------------------|-----|-------|
| 1. | St. Pauls Square | 0.1 | Miles |
| 2. | Colmore Row | 0.6 | Miles |
| 3. | Victoria Square | 0.8 | Miles |
| 4. | Grand Central | 0.8 | Miles |
| 5. | Birmimnham Library | 0.8 | Miles |
| 6. | Aston University | 0.9 | Miles |
| 7. | Brindley Place | 0.9 | Miles |
| 8. | Bullring | 1.1 | Miles |
| 9. | Birmingham City University | 1.1 | Miles |
| 10. | Custard Factory | 1.5 | Miles |

TRANSPORT CONNECTIONS

- | | | | |
|---|-------------------|-----|-------|
|  | Snow Hill | 0.3 | Miles |
|  | Jewellery Quarter | 0.4 | Miles |
|  | New Street | 0.8 | Miles |
|  | Moor Street | 1.0 | Miles |
|  | HS2 | 1.1 | Miles |





12

Computer generated image. Subject to change.

WHERE *history* AND
 CONTEMPORARY *design*
 SEAMLESSLY COMBINE

The Pressworks has been designed to preserve the sites working heritage whilst creating a place fit for the modern world. Demonstrated through the restoration of the original grade II listed building and the addition of new build elements, The Pressworks is the finest example of history and contemporary design seamlessly combining to create a unique place.

13



POCKETS *of green*
FOR RESIDENTS *to enjoy*
ALL YEAR ROUND

Courtyards and outdoor space play an important role in creating pockets of green for residents to enjoy all year round. An original metal press has been restored by expert technicians and stands proudly in one of the courtyards as a reminder of the sites working history and celebration of local craftsmanship.



Computer generated image. Subject to change.



Computer generated image. Subject to change.



20

Computer generated image. Subject to change.

FLEXIBLE *living spaces*
DESIGNED FOR
modern LIFE

Flexible living spaces have been carefully considered for modern life. Open-plan floorplates, high ceilings and innovative layouts are a feature throughout making The Pressworks the most desirable place to live.

21



HOMES FULL
OF *character* AND
unique FEATURES

Unique and one-of-a-kind, The Pressworks is full of character and unique features. Over-height ceilings and exposed roof trusses create a sense of space, whilst restored brick walls and crittal-style windows achieve an industrial-chic and stylish interior aesthetic.





26

27

Computer generated image. Subject to change.



Computer generated image. Subject to change.



Computer generated image. Subject to change.

THE
JEWELLERY
QUARTER

*Birmingham's most
prestigious neighbourhood*



EXPLORE
BIRMINGHAM'S *prestigious*
JEWELLERY QUARTER

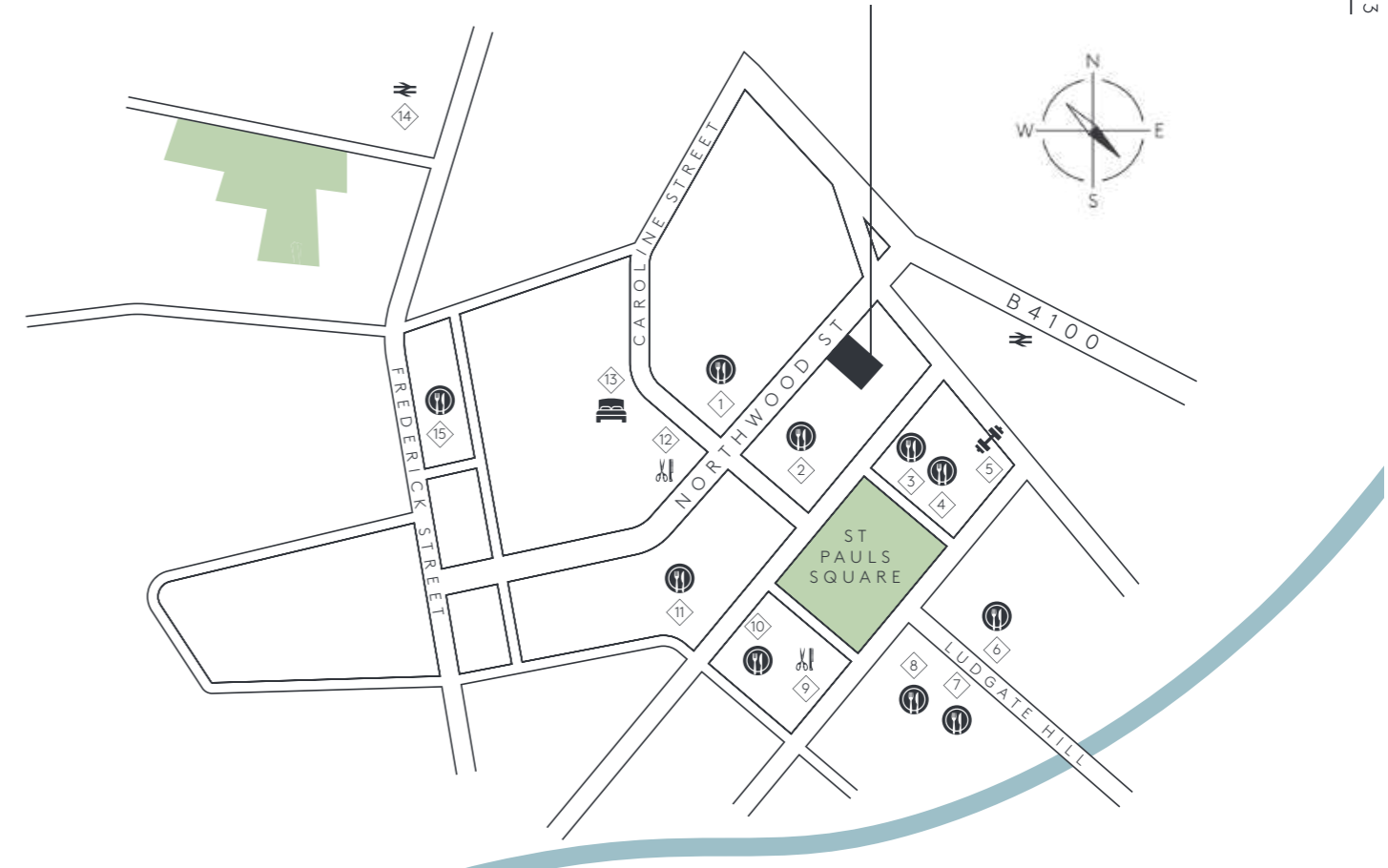
The Jewellery Quarter is more than a place to live, it's a way of life and is regarded as Birmingham's most prestigious neighbourhood. Just moments from Birmingham City Centre, The Jewellery Quarter feels like a village in the big city. Accessible and connected, cool and calm, The Jewellery Quarter is rooted in history with a modern and cosmopolitan outlook on the city.



MAP KEY

- | | |
|----------------------------|-------------------------------|
| 1. Otto's Wood-fired Pizza | 8. Saint Kitchen |
| 2. Folium | 9. Jake's Barbers |
| 3. St Paul's House | 10. Pasta Di Piazza |
| 4. Anderson's Bar & Grill | 11. Lasan Indian |
| 5. Henrietta St. Gym | 12. Harris Gibbs Salon |
| 6. The Jam House | 13. Bloc Hotel |
| 7. The Actress & Bishop | 14. Jewellery Quarter Station |
| 8. Saint Kitchen | 15. The Button Factory |

THE
PRESSWORKS



A GLOBAL CITY

Attracting attention from investors all over the world.

The Bullring, Birmingham





DISCOVER
THE UK'S *capital*
OF GROWTH

Strategically positioned in the heart of the country, Birmingham is central to the UK's strong economic performance. The city has a booming £120 billion regional economy and is home to a large number of international brands that employ thousands of people throughout the region.

MAJOR EMPLOYERS





BIRMINGHAM IS
A CITY *you can*
BANK ON

In 2021, Goldman Sachs unveiled a major investment into Birmingham, opening its biggest office outside of London and creating ‘hundreds of jobs’ in the process. In recent years, the city has become home to the domestic HQ of banking giant HSBC whilst Deutsche Bank also has a large presence in Birmingham.

THE
£120 *billion*
REGIONAL ECONOMY

Birmingham is an economic powerhouse in the UK. Analysts predict the city’s Gross Value Added (GVA) - the value of goods and services produced in the area - to increase by 16.4% by 2030, much faster than other areas in the country. Given the uplift from job creation, inward investment and a growing population, the demand for quality city-centre living in Birmingham is expected to continue to grow exponentially.

REASONS TO INVEST IN BIRMINGHAM



SOURCE: KNIGHT FRANK



Birmingham is home to 110,000 companies and over 715,000 employees, the largest concentration outside of London.



Birmingham is firmly established as England's second city with a population of 1,149,000 (2019). Furthermore, this population is forecast to grow +0.51% pa over the period 2019-2024, 19% higher than the UK average.



HIGH-SPEED *growth*
FOR A CITY
going PLACES

Centrally located in the middle of England, Birmingham boasts an enviable transport infrastructure that includes an international airport, extensive mainline rail network and connected motorways soon to be bolstered by the state-of-the-art, high-speed rail project, HS2.

Arriving in 2026, HS2 will bring Birmingham within 45 minutes journey of London and an hour's journey of Manchester, Sheffield, whilst shaping Britain's low carbon transport future and creating over 22,000 new jobs.

Getting around the city is just as easy as getting around the country. Birmingham's Metro Light Rail Line sees trams run every 6-8 minutes throughout the week. The line currently spans 13 miles with further expansion plans that will see it become the first in the UK to operate battery powered trams and electric overhead lines.

45

TRAVEL BY HS 2

| | |
|------------|-----|
| MANCHESTER | 40M |
| LONDON | 45M |
| SHEFFIELD | 49M |
| LEEDS | 49M |

TRAVEL BY MAINLINE RAIL

| | |
|---------------------|--------|
| CHELTENHAM | 45M |
| LONDON EUSTON | 1H 13M |
| LONDON MARYLEBONE | 1H 39M |
| MANCHESTER VICTORIA | 1H 47M |

TRAVEL BY AIR

| | |
|----------|---------|
| PARIS | 1H 25M |
| DUBAI | 7H 5M |
| NEW YORK | 11H 23M |
| BEIJING | 12H |

TRAVEL BY CAR

| | |
|-----------|---------|
| COVENTRY | 30M |
| LEICESTER | 55 M |
| OXFORD | 1 H 22M |
| LONDON | 2H |

HOME TO
world-class EDUCATION
INSTITUTIONS

Birmingham is home to a variety of world-class educational institutions including leading universities and the UK's oldest graduate-level business school. 40% of Birmingham's final year students intend to stay in the city after graduation, fuelling demand for high-quality city-centre living accommodation.

LEADING UNIVERSITIES





Birmingham is a culturally diverse and integrated city, home to a huge mix of different nationalities and religions. Residents and visitors describe the city as a very friendly place to live, work and play.

Proud hosts of
the Birmingham 2022
Commonwealth Games





A *stylish*
CITY AND *leading*
RETAIL DESTINATION

Birmingham is full of exciting things to do and is a world-class retail destination. Global brands including Selfridges, Harvey Nichols, and Louis Vuitton all have a presence in the city.

50

51



TOP RETAILERS

- | | | |
|----------------------------|----------------|------------|
| SELFRIDGES & CO | PELOTON | Paul Smith |
| JO MALONE LONDON | LOUIS VUITTON | Apple |
| BoConcept | HARVEY NICHOLS | ROLEX |



A MENU FULL OF
delicious FLAVOURS AND
culinary delights

Birmingham has an incredible culinary scene from Michelin star restaurants to fine dining and tasty eats. A little bit of whatever you fancy is on the menu every single day. Take your pick.





ENJOY THE *great*
 OUTDOORS AND *abundant*
 OPEN SPACE

Birmingham is bursting with outdoor attractions. The city boasts more canals than Venice, a huge selection of local parks and open spaces to explore and enjoy whenever you fancy.

THE REGION'S OPEN SPACE



MILES OF
CANALS



LOCAL
PARKS



HECTARES OF
OPEN SPACE

INTERIOR SPECIFICATION

GENERAL

- Walls & ceilings in white matt finish
- Satin white door linings, skirtings & architraves
- Internal doors in satin white finish
- Oak engineered timber floor to hallway, living room, bedrooms (selected apartments) and kitchen
- Carpets to bedrooms on selected units
- Matt black door furniture
- Double glazing throughout
- Feature staircase on selected duplex units
- 10-year new build warranty from date of legal completion
- 250-year lease

ELECTRICAL

- Recessed LED low energy downlighting with white bezels
- Matt black switch & socket plates
- Double sockets with (USB connections) in selected areas
- Satellite, Digital TV and DAB cabling to TV locations
- Video and audio door entry system
- Thermostatically controlled heating via traditional column electric radiators
- Matt black shaver sockets
- Ceiling pendent lighting in bedrooms
- Electric heated towel rails

KITCHENS

- Contemporary handleless kitchen design with integrated appliances
- Composite stone worktops & matching upstand
- Bosch or similar quality single oven
- Integrated cooker hood
- Bosch or similar quality touch control integrated hob
- Integrated dishwasher
- Integrated 70/30 fridge freezer
- Bosch or similar quality integrated washer / dryer - or in the service cupboards

BATHROOMS/ ENSUITES

- White wall mounted WC with concealed cistern
- White semi-recessed basin with tiled worktop
- Single end baths with autofill bath tap
- Thermostatic controlled in bath showers with black trim shower screens
- White shower trays with clear glass slim matt black frame
- Full width mirror to recess area (on selected units)
- Ceramic floor tiles and tiling to selected walls
- Matching ceramic tiled bath panels
- Matt black brassware
- Matt black towel radiator
- Recessed alcoves to selected bathrooms

LIVING / DINING

- Walls & ceilings in white matt finish.
- Satin white door linings, skirtings & architraves.
- Oak plank Amtico click system throughout hall, living room, bedrooms and kitchen area.
- Internal doors in satin white finish.
- Brushed stainless steel door furniture.
- Brushed metal switch & socket plates with USB charging points in kitchen, living area and bedroom.
- Recessed LED low energy downlighting with white bezels.

HOME STUDY AREAS

- Walls & ceilings in white matt finish
- Matt black double sockets with (USB connections)
- Oak engineered timber floor
- Recessed LED low energy downlighting with white bezels.

COMMUNAL AREA / RESIDENTS

FACILITIES

- Spacious interior designed communal entrance foyers.
- Residents lounge area
- CCTV security system
- 8-Person Passenger Lifts
- Ceramic floor tiles to lift lobbies & carpet floor tiles to corridor
- Internal doors in satin painted finish.
- Matt black door furniture.
- LED low energy downlighting & feature lighting
- Secure cycle store
- Private residents courtyard areas

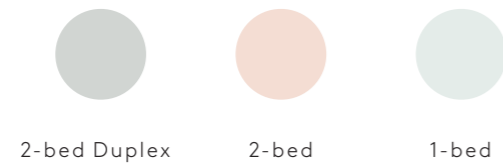
FLOORPLANS

GROUND FLOOR



62

APARTMENT TYPES

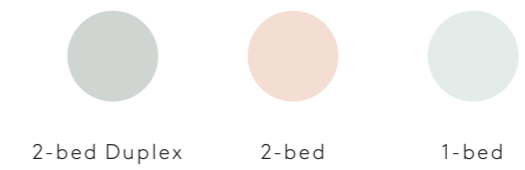


FIRST FLOOR



63

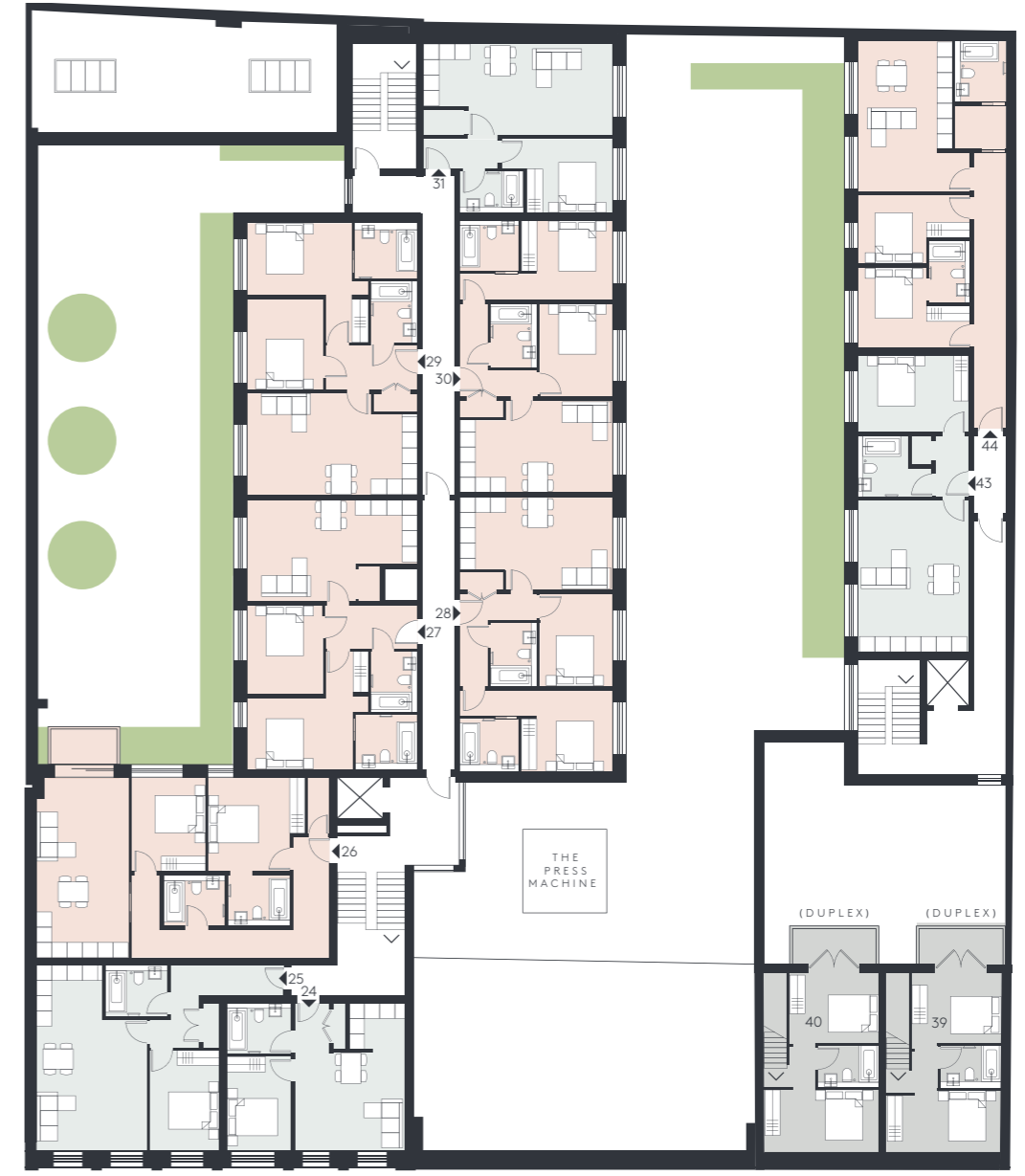
APARTMENT TYPES



SECOND FLOOR



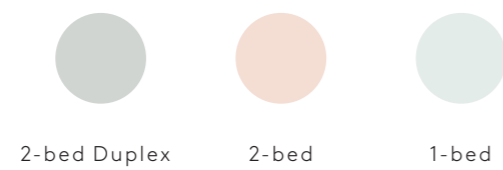
THIRD FLOOR



64

65

APARTMENT TYPES



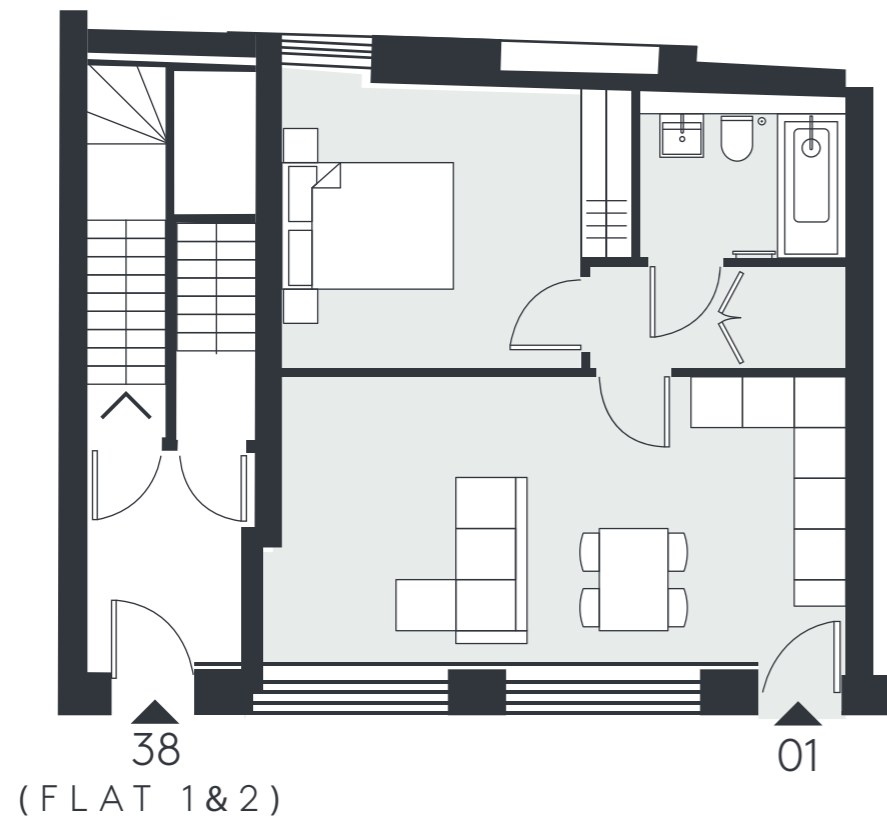
APARTMENT TYPES



GRADE II
LISTED LOFTS

G
FLOOR

GRADE II
LISTED LOFTS



APARTMENT 01

| | | |
|------------|---------------|-----------|
| Type | 1 Bed, 1 Bath | |
| Total Area | 484 sq/m | 521 sq/ft |

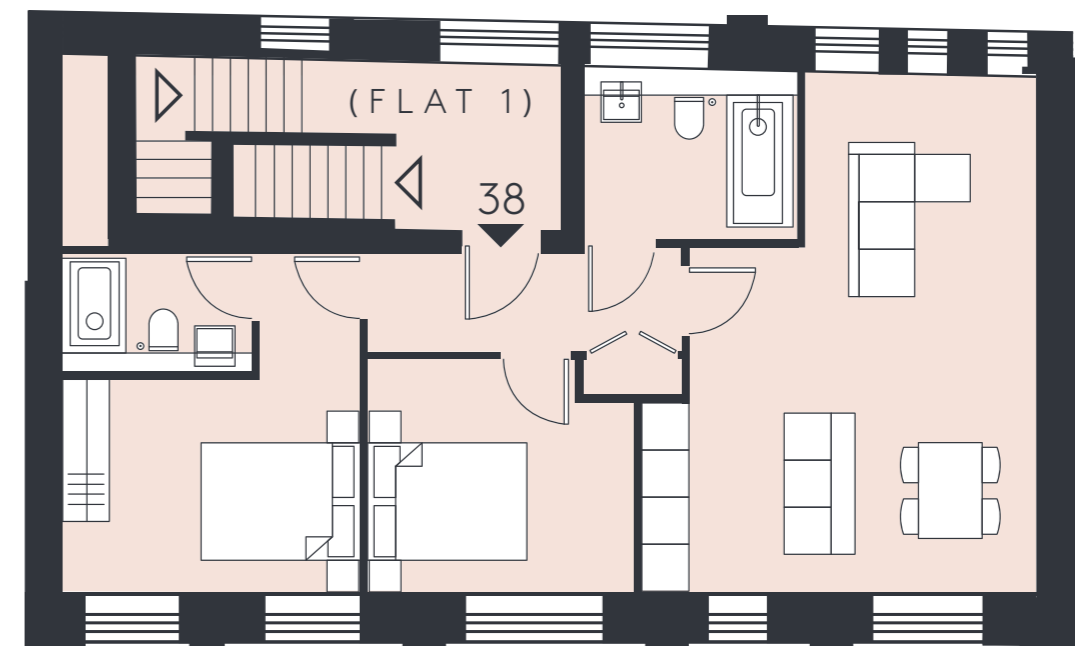
NORTHWOOD STREET

Disclaimer:
Floorplans shown are approximate only. Exact layouts and sizes may vary.
Furniture is not included in the sale.

68

01
FLOOR

GRADE II
LISTED LOFTS



NO. 38 NORTHWOOD STREET (01)

| | | |
|------------|---------------|-----------|
| Type | 2 bed, 2 Bath | |
| Total Area | 73.1 sq/m | 787 sq/ft |

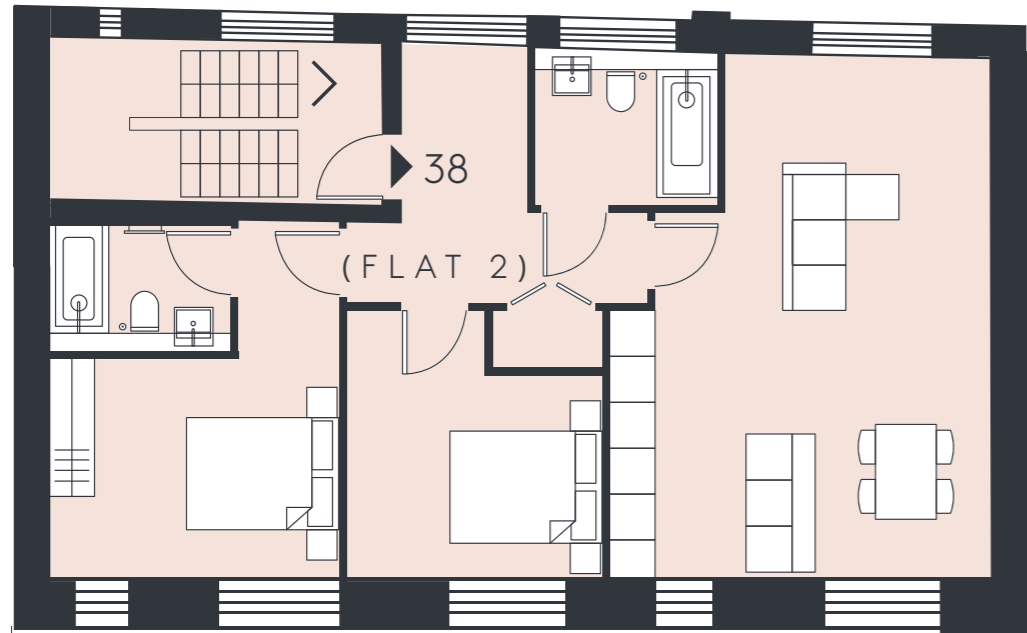
NORTHWOOD STREET

Disclaimer:
Floorplans shown are approximate only. Exact layouts and sizes may vary.
Furniture is not included in the sale.

69

02
FLOOR

GRADE II
LISTED LOFTS



NO. 38 NORTHWOOD STREET (2)

Type 2 bedroom, 2 bathroom
Total Area 80.0 sq/m 861 sq/ft

NORTHWOOD STREET

Disclaimer:
Floorplans shown are approximate only. Exact layouts and sizes may vary.
Furniture is not included in the sale.



70

71

CENTRAL
BLOCK

G
FLOOR

THE
CENTRAL BLOCK



NO. 34 NORTHWOOD STREET

Type 2 bed, 2 bath Duplex
Total Area 101 sq/m 1087 sq/ft

NO. 36 NORTHWOOD STREET

Type 2 bed, 2 bath Duplex
Total Area 103.4 sq/m 1113 sq/ft

APARTMENT 02

Type 2 bed, 2 bath, Private Terrace
Total Area 82.2 sq/m 885 sq/ft

APARTMENT 03

Type 2 bed, 2 bath, Private Terrace
Total Area 71.5 sq/m 770 sq/ft

APARTMENT 04

Type 1 bed, Study
Total Area 62.1 sq/m 669 sq/ft

APARTMENT 05

Type 1 bed, Study
Total Area 66.1 sq/m 712 sq/ft

APARTMENT 06

Type 1 bed, Study
Total Area 60.2 sq/m 648 sq/ft

APARTMENT 07

Type 1 bed
Total Area 45.0 sq/m 484 sq/ft

APARTMENT 08

Type 2 bed, 2 bath, Private Terrace
Total Area 71.8 sq/m 773 sq/ft

Disclaimer:

Floorplans shown are approximate only. Exact layouts and sizes may vary.
Furniture is not included in the sale.

G
FLOOR

THE
CENTRAL BLOCK



01
FLOOR

THE
CENTRAL BLOCK



APARTMENT 10

Type 2 bed, 2 bath, Private Balcony
Total Area 82.2 sq/m 885 sq/ft

APARTMENT 11

Type 2 bed, 2 bath
Total Area 71.5 sq/m 770 sq/ft

APARTMENT 12

Type 2 bed, 2 bath
Total Area 65.2 sq/m 701 sq/ft

APARTMENT 13

Type 2 bed, 2 bath
Total Area 71.8 sq/m 773 sq/ft

APARTMENT 14

Type 2 bed, 2 bath
Total Area 64.9 sq/m 699 sq/ft

APARTMENT 15

Type 1 bed, 1 bath
Total Area 47.2 sq/m 508 sq/ft

Disclaimer:

Floorplans shown are approximate only. Exact layouts and sizes may vary.
Furniture is not included in the sale.

01
FLOOR

THE
CENTRAL BLOCK



02
FLOOR

THE
CENTRAL BLOCK



APARTMENT 16

Type 1 bed, 1 bath
Total Area 40.9 sq/m 440 sq/ft

APARTMENT 17

Type 1 bed, 1 bath
Total Area 50.5 sq/m 543 sq/ft

APARTMENT 18

Type 2 bed, 2 bath, Private Balcony
Total Area 82.2 sq/m 885 sq/ft

APARTMENT 19

Type 2 bed, 2 bath
Total Area 69.1 sq/m 744 sq/ft

APARTMENT 20

Type 2 bed, 2 bath
Total Area 65.2 sq/m 702 sq/ft

APARTMENT 21

Type 2 bed, 2 bath
Total Area 71.8 sq/m 773 sq/ft

APARTMENT 22

Type 2 bed, 2 bath
Total Area 64.9 sq/m 699 sq/ft

APARTMENT 23

Type 1 bedroom, 1 bath
Total Area 47.2 sq/m 508 sq/ft

Disclaimer:
Floorplans shown are approximate only. Exact layouts and sizes may vary.
Furniture is not included in the sale.

02
FLOOR

THE
CENTRAL BLOCK



03
FLOOR

THE
CENTRAL BLOCK



APARTMENT 24

Type 1 bed
Total Area 40.9 sq/m 440 sq/ft

APARTMENT 25

Type 1 bed
Total Area 50.5 sq/m 543 sq/ft

APARTMENT 26

Type 2 bed, 2 bath, Private Balcony
Total Area 82.2 sq/m 885 sq/ft

APARTMENT 27

Type 2 bed, 2 bath
Total Area 69.1 sq/m 744 sq/ft

APARTMENT 28

Type 2 bed, 2 bath
Total Area 65.2 sq/m 702 sq/ft

APARTMENT 29

Type 2 bed, 2 bath
Total Area 71.8 sq/m 773 sq/ft

APARTMENT 30

Type 2 bed, 2 bath
Total Area 64.9 sq/m 699 sq/ft

APARTMENT 31

Type 1 bed
Total Area 47.1 sq/m 506 sq/ft

Disclaimer:

Floorplans shown are approximate only. Exact layouts and sizes may vary.
Furniture is not included in the sale.

03
FLOOR

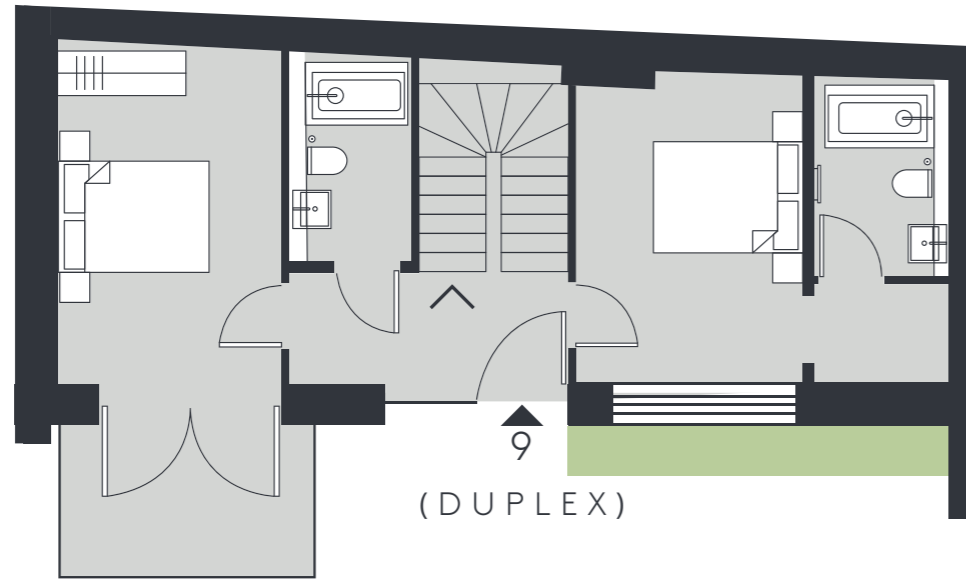
THE
CENTRAL BLOCK



MEWS
HOUSE

G
FLOOR

THE
MEWS HOUSE



MEWS HOUSE (APARTMENT 9)

Type 2 bed Duplex, 2 bath, Private Terrace
Total Area 98.6 sq/m 1062 sq/ft

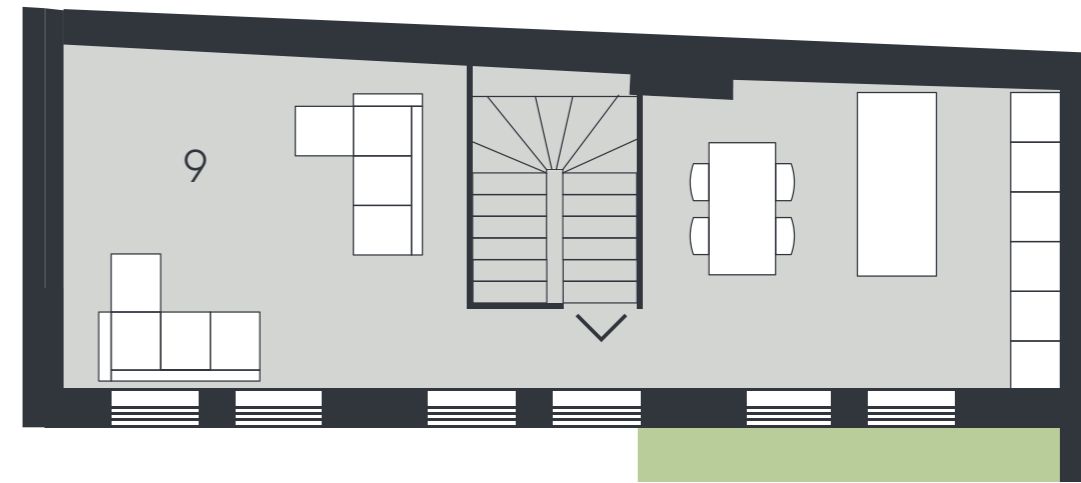
NORTHWOOD STREET

Disclaimer:
Floorplans shown are approximate only. Exact layouts and sizes may vary.
Furniture is not included in the sale.

84

01
FLOOR

THE
MEWS HOUSE



NORTHWOOD STREET

Disclaimer:
Floorplans shown are approximate only. Exact layouts and sizes may vary.
Furniture is not included in the sale.

85

SOUTH
BLOCK

G
FLOOR

THE
SOUTH BLOCK



APARTMENT 32

Type 2 bed, 2 bath, Private Terrace
Total Area 67.5 sq/m 726 sq/ft

APARTMENT 33

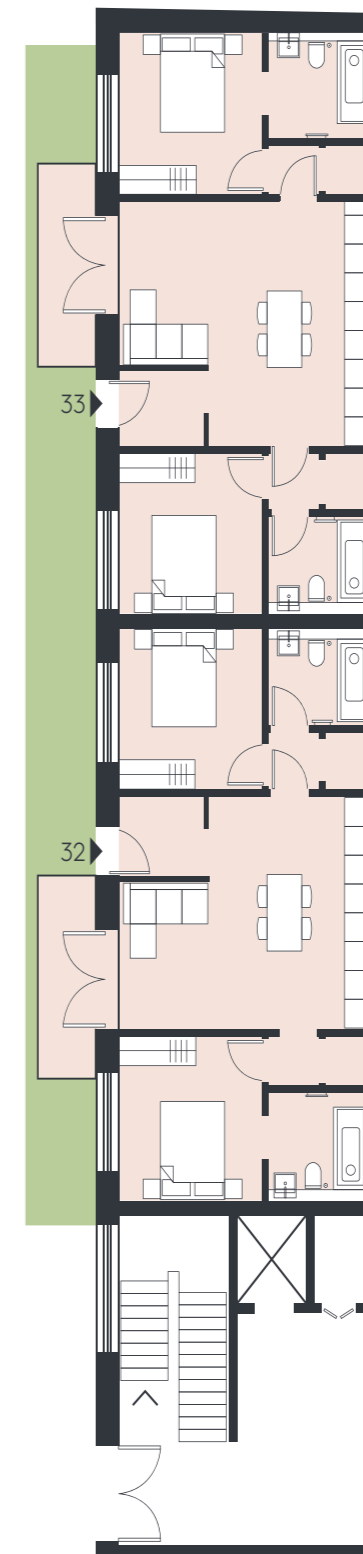
Type 2 bed, 2 bath, Private Terrace
Total Area 72.0 sq/m 775 sq/ft

Disclaimer:

Floorplans shown are approximate only. Exact layouts and sizes may vary.
Furniture is not included in the sale.

G
FLOOR

THE
SOUTH BLOCK



33

32

^

01
FLOOR

THE
SOUTH BLOCK



APARTMENT 34

Type 2 bed
Total Area 73.7 sq/m 794 sq/ft

APARTMENT 35

Type 1 bed, Private Balcony
Total Area 54.9 sq/m 591 sq/ft

APARTMENT 36

Type 1 bed, 1 bath
Total Area 50.6 sq/m 544 sq/ft

APARTMENT 37

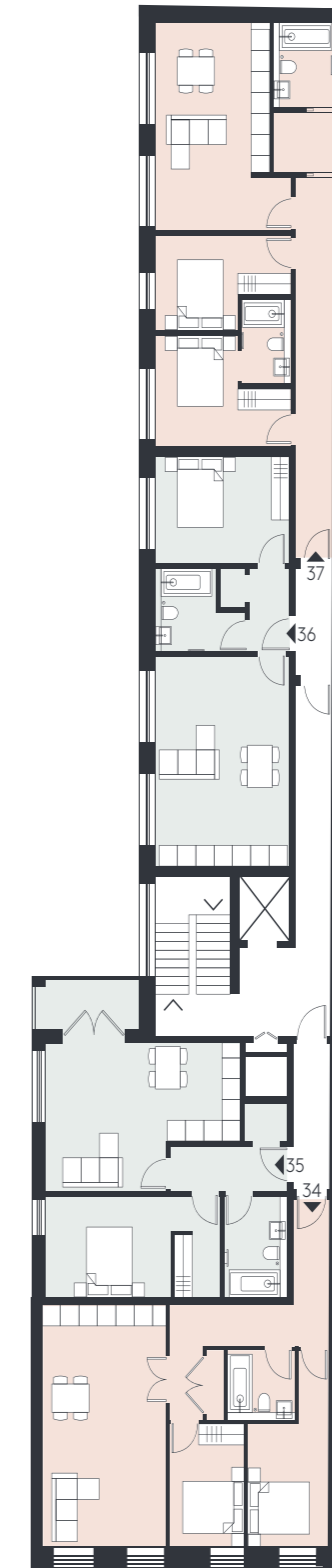
Type 2 bed, 2 bath
Total Area 75.8 sq/m 816 sq/ft

Disclaimer:

Floorplans shown are approximate only. Exact layouts and sizes may vary.
Furniture is not included in the sale.

01
FLOOR

THE
SOUTH BLOCK



02
FLOOR

THE
SOUTH BLOCK



APARTMENT 38

Type 1 bed, Private Balcony
Total Area 54.9 sq/m 591 sq/ft

APARTMENT 39

Type 2 bed Duplex, Private Balcony
Total Area 57.4 sq/m 618 sq/ft

APARTMENT 40

Type 2 bed Duplex, Private Balcony
Total Area 65.5 sq/m 706 sq/ft

APARTMENT 41

Type 1 bed
Total Area 50.6 sq/m 544 sq/ft

APARTMENT 42

Type 2 bed, 2 bath
Total Area 75.8 sq/m 816 sq/ft

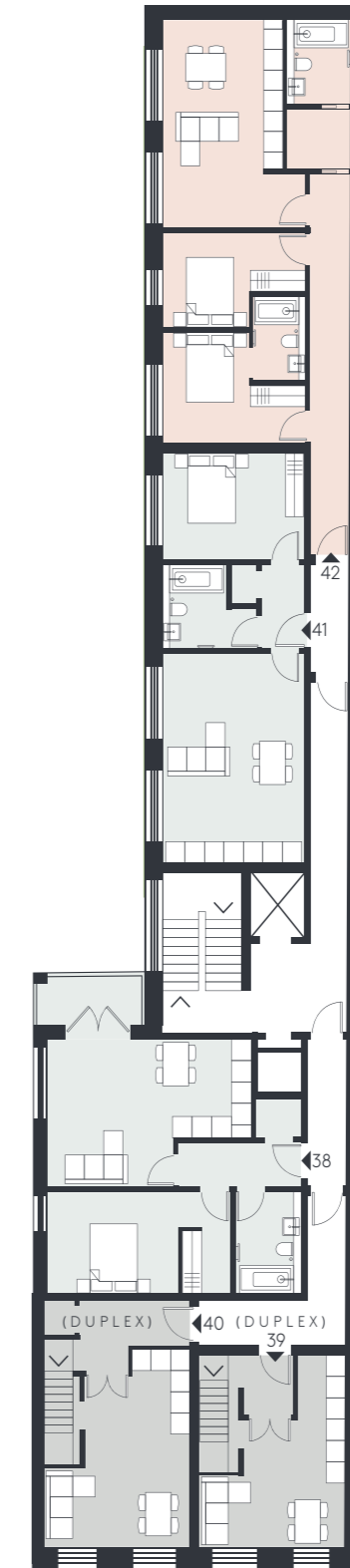
Disclaimer:

Floorplans shown are approximate only. Exact layouts and sizes may vary.
Furniture is not included in the sale.

92

02
FLOOR

THE
SOUTH BLOCK



93

03
FLOOR

THE
SOUTH BLOCK



APARTMENT 43

Type 1 bed, 1 bath
Total Area 50.6 sq/m 544 sq/ft

APARTMENT 44

Type 2 bed, 2 bath
Total Area 75.8 sq/m 816 sq/ft

Disclaimer:

Floorplans shown are approximate only. Exact layouts and sizes may vary.
Furniture is not included in the sale.

03
FLOOR

THE
SOUTH BLOCK

