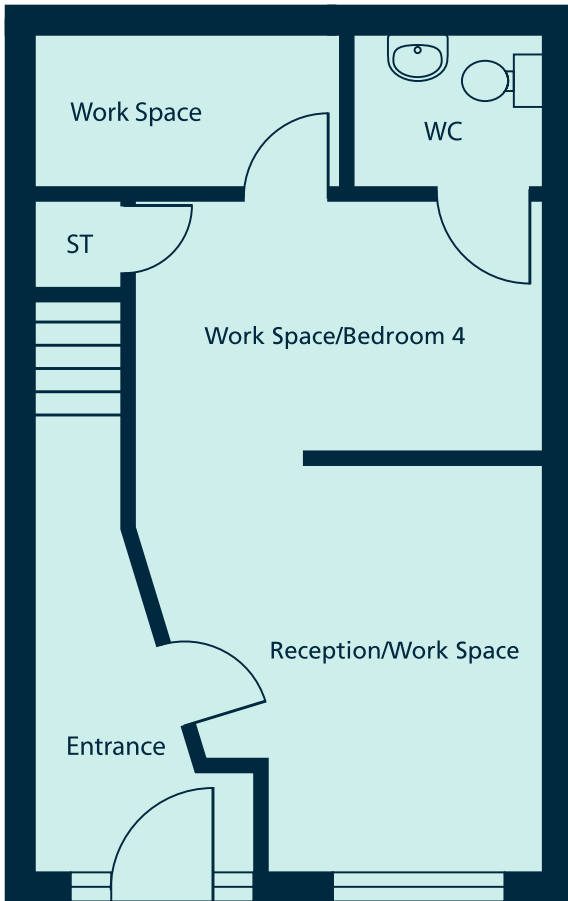




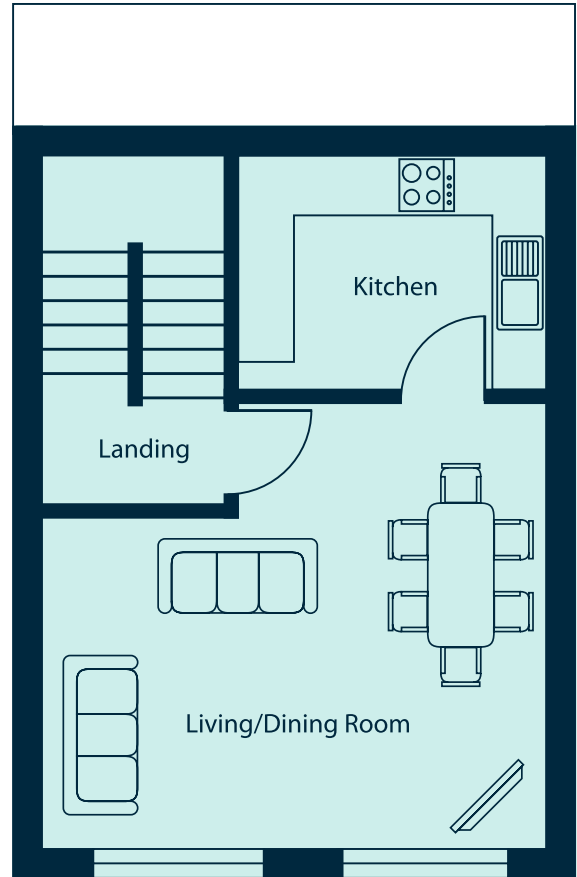
## REGENTS PLACE

For the ultimate work-life balance

FOUR • FREEHOLD • LIVE • WORK • RELAX



Ground Floor



First Floor

### Ground Floor

Workspace 1	4.239	x	4.245
Workspace 2	2.638	x	3.215
Workspace 3	2.985	x	1.231
WC	1.525	x	2.200
Entrance	1.684	x	4.740

### Second Floor

Bedroom 1	3.541	x	2.580
Bedroom 2	5.341	x	2.605
Bathroom	1.600	x	3.215
Landing	1.970	x	1.058

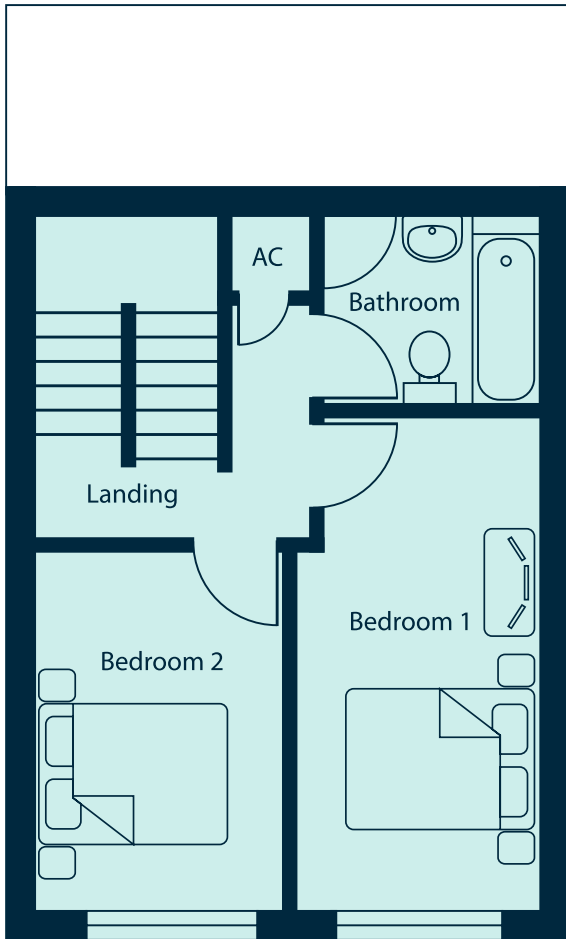
### First Floor

Living Space	4.668	x	5.275
Kitchen	2.415	x	3.215
Landing	1.150	x	1.970

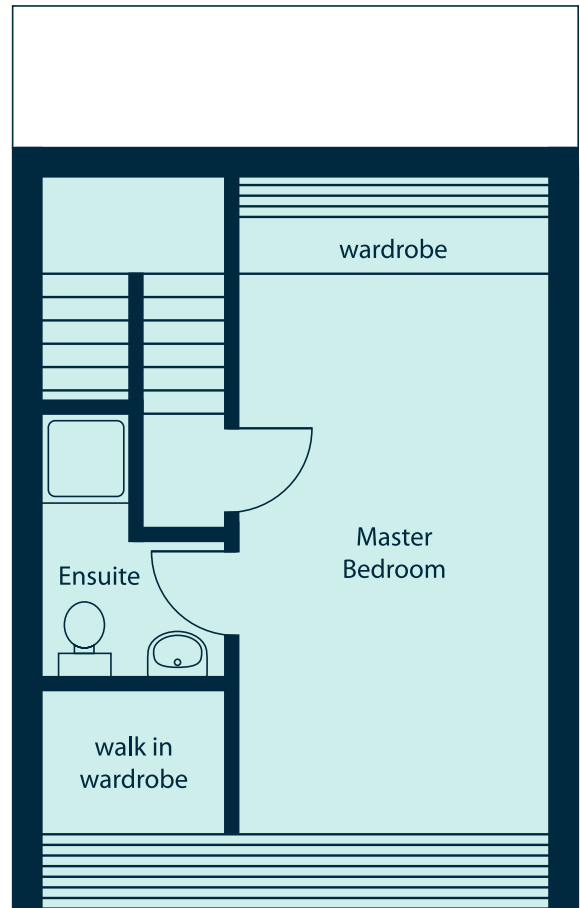
### Third Floor

Master Bedroom	5.149	x	4.005
Ensuite	1.200	x	2.731
Landing	0.930	x	1.058

\*Please note; the Ground Floors differ in Plots 1 and 3. (All dimensions are in metres)



*Second Floor*



*Third Floor*

## Specification

### Kitchens

- Kitchen Furniture
- 600mm and 1200mm high baseline units
  - Carcase colour: Alabaster U104
  - Door colour: Alabaster U104
  - 18mm solid furniture units (standard soft close)
  - 128mm chrome bow handles
  - CDA single stainless steel sink with CDA single lever chrome tap
  - Spectra 600 x 40mm lunar night glaze worktop

### White Goods

- Beko Oven
- Beko gas hob
- Beko Chimney Hood
- Beko Fridge / Freezer

### Wall tiling

- White chapel gloss tiles 200 x 100 x 7mm with random black
- Blackfriars gloss tiles 200x100x7mm

### Floor covering

- Black gloss Marble Effect floor tiles 333 x 333 x 7mm

### Bathrooms, cloakrooms and en-suites

#### Ensuite

- Lyndia cistern with standard seat
- Lyndia basin and pedestal
- Indi 900mm bi-fold doors to shower
- Indi 760mm side panels to shower
- Indi 760 x 900mm rectangular shower tray
- Casma thermostatic bar valve shower

#### Bathroom

- Armitage Shanks Sandringham 2 tap bath white 1685 (L) x 695mm (W)
- Armitage Shanks Sandringham toilet white 655 (L) x 770 (D) x 450mm (W)

- Armitage Shanks Sandringham basin with pedestal and
- Monaco single lever tap in chrome

#### Wall tiling

- White Metro 150 x 75mm bevelled edge ceramic tile

#### Floor Covering

- Beige Tavertine effect tiles 600 x 400 x 9mm ceramic tiles

#### Internal doors

- Lisburn Ply Veneer doors fire rated 44mm thick with
- Chateau Square Rose latch handles in chrome.



## Perfectly appointed

Located in the thriving Jewellery Quarter, close to St Paul's Square, Regents Place offers an idyllic location with beautiful buildings, excellent local amenities and landscaped green areas to relax in.

Birmingham city centre and all it has to offer is just a few minutes away and can be easily reached via the over-carriageway footbridge.

The area boasts premium retail experiences at the Bullring and the Mailbox, a wide variety of theatres, museums, galleries and live music venues, plus award-winning restaurants serving cuisine from all over the globe.

Key routes out of the city are just seconds away by car, as is the city's extensive rail network, while the international airport is easily reached by road or rail.

There is allocated resident & business parking in Regents Place & nearby on Caroline Street.



another stunning development by



**FIELDING & BEAUMONT**  
PLC

[info@fieldingandbeaumontplc.co.uk](mailto:info@fieldingandbeaumontplc.co.uk)



[maguirejackson.com](http://maguirejackson.com)  
**0121 634 1520**

55 -61 REGENT PLACE, BIRMINGHAM, WEST MIDLANDS B1 3NJ

ALL ENQUIRIES CONTACT KATHRYN MOLLOY • TEL: 0121 634 1520 • [KATHRYN@MAGUIREJACKSON.COM](mailto:KATHRYN@MAGUIREJACKSON.COM)